



Bletchley Park
P R I M A R Y

BRING YOUR OWN DEVICE (BYOD)

TUESDAY 16TH JULY 2024



BLETCHLEY PARK PRIMARY SCHOOL

Our Vision

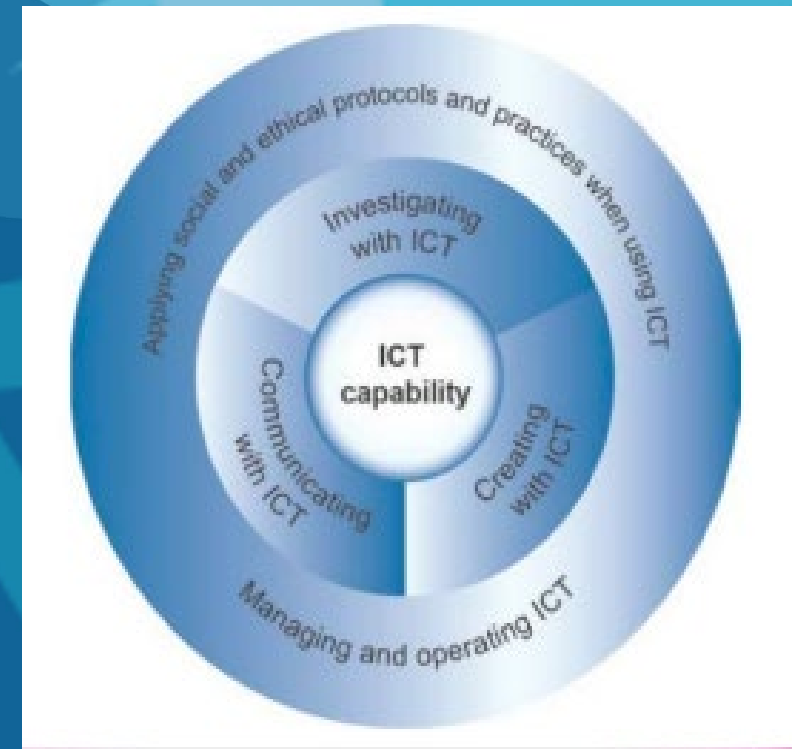
Bletchley Park PS is committed to using technology to amplify learning across the curriculum and ensure our students are equipped with the necessary skills, knowledge and values to be successful digital citizens.



Information and Communication Technology (ICT) Core Documents

Department of Education WA

School Curriculum and Standards Authority (SCSA)



ICT VISION FOR TEACHING AND LEARNING IN PUBLIC SCHOOLS 2020 - 2024

The Department of Education's 2020-2024 ICT Vision for Teaching and Learning in Public Schools, focuses on the importance of 'preparing students for a world that is constantly changing and evolving, by developing in them the personal capabilities and technical skills they will need for success.'

- Lisa Rodgers, Director General

Students

Must have the capability to adapt and transfer their knowledge and skills across a range of learning and work environments.

Teachers

Need to model collaboration and acquisition of new skills through continuous learning. Teachers also need to embrace technology and be flexible in the way they teach- to inspire and maximise learning.

School Leaders

Take responsibility for driving a culture of technological innovation and collaboration, ensuring students have access to technologies that deliver improved learning outcomes and progress for every student, every classroom, every day.



OUR STUDENTS

Capitalise on the opportunities of the future as empowered creators and users of technology.



OUR STUDENTS WILL BE ENCOURAGED TO:

1. Be inspired to **apply creative thinking and design processes** to generate and test new ideas and co-create solutions.
2. Become **discerning users of technology** and choose the right tools at the right time.
3. **Navigate the digital environment responsibly, safely and ethically**, to maximise opportunities in learning, work and life.
4. Personalise their learning, and **use technology to generate new ideas** and new ways to learn.
5. Be empowered to **use technology to create, use and communicate complex ideas** clearly and effectively for a range of purposes and audiences.
6. Take an active and strategic role in **using technology to achieve learning outcomes**.
7. Be **critical consumers of information** to enrich their learning and broaden their understanding.
8. **Model positive and responsible use of technology**, focusing on wellbeing, cyber safety, global citizenship, cultural competence and ethical practices.
9. Be well-prepared to **take the next step beyond school** into further education, training or work



HOW DO WE USE BYOD?

1. **TOOL** and resource for learning, not Toy.
2. **ENHANCE** learning, not replace.
3. **Teach Digital Literacy** and ICT skills.
4. **“End of Process”** Activities

YEAR 4 BYOD RATIONALE

1. Enable Year 4 curriculum learning and ICT integration to be extended by being able to **take iPads home** and continue work, and engage with class projects
2. Year 4 is the critical year for cementing learning of **safe & responsible use of ICT.**
3. Enabling **Year 3 cohort to integrate 1:1 device use**, provide initial teaching of device skills, as well as safe & responsible use.
4. **Three years of school usage**, as opposed to two.



BYO IPAD 1:1

BYO iPad 1:1 Program Information



Bletchley Park
PRIMARY

Parents and Students

Year 4 – 6

2025



BLETCHLEY PARK PRIMARY SCHOOL



Why Apple iPads?

Bletchley Park Primary School has engaged in a significant amount of research and explored a number of possibilities when deciding upon the most appropriate technology to support students to meet the curriculum requirements. Apple iPads have been selected due to the following benefits:



- cost efficient
- lightweight and portable (small in size)
- versatile range of learning applications
- reliable and stable
- user friendly and age adaptable
- accessibility features and enhanced security
- provides opportunities for creativity and collaboration
- battery life

Considerations:

- *The newer the iPad, the longer it will be able to accommodate future software and app purchases.*
- *Airplay and Airdrop functions are supported with the latest model iPads*
- *Available technology on new versions of the iPad are of greater capacity and quality than previous devices. An iPad compatible with the latest operating system (iOS) enables access to features such as Files, including the ability to save to file servers or external drives, easier text editing, slide over and split views for easier multitasking between applications.*
- *9th and 10th generation iPads use different connection ports, and may need different chargers, headphones and styluses.*

Hardware

In order to work efficiently and ensure compatibility with the school system and classroom needs, devices must have the following features:

- be an **Apple iPad** (9th generation onwards)
- have iOS17.5 installed (minimum)
- data storage of **at least** 64gb

Please note: *alternative devices, including Android tablets, iPad minis, iPad Pros and iPads with a sim card (which use mobile cellular 3G/4G/5G data) will not be permitted.*



iPad Specifications

Accessories

Required:

- protective case/cover
- Headphones (iPad 10 require an adapter to use with normal headphones)
- Bluetooth keyboard (either inbuilt with case or separate)

Optional:

- stylus
- screen protector





Purchasing Options

Some parents may wish to purchase devices as a Christmas present for their child before their child transitions to the new year level in 2025. Devices can be purchased from a number of retailers including Apple, JB Hifi, Office Works, Big W, The Good Guys and Harvey Norman. They can be used over the Christmas period and data backed up. All devices need to be factory reset before they can be used at school to allow school apps and safety protocols to be installed.

Keyboard

The school uses and recommends the Logitech Rugged Folio keyboard case. It uses Smart Connector technology, so no pairing or charging is required. It has sealed keys that make it less likely to be damaged by spills, dirt and keys coming off. The keyboard is a perfect size for students' hands, and it has iOS shortcut keys. The keyboard types silently and the case has a kickstand that is durable and reliable.



AppleCare+

All Apple hardware comes with a one-year limited warranty and up to 90 days of complimentary telephone technical support. You can extend your coverage through AppleCare+ which can be purchased for a small additional cost and provides a two year warranty. See for more information:

<https://www.apple.com/au/support/products/ipad/>

Insurance

Insurance is an important consideration as the iPad your child brings to school is not covered by the Bletchley Park Primary School or the Department of Education's insurance. It is the responsibility of parents to insure their child's device.

Bringing Your Own Device (BYOD) to school with JB Hi-Fi Education

Bletchley Park Primary

BYOD PROGRAM 2025



● JB Hi-Fi Education.
More for schools.



JB Hi-Fi Education

Who Are We?

- JB Hi-Fi Education is part of the commercial arm of the JB Hi-Fi Group.
- We work with schools and learning institutions to help them meet their pedagogical goals with our products and services.
- Our purpose as a group, is to help people with better ways, to LIVE, LEARN, WORK and PLAY.

● **Let's go through the details of our BYOD Program with JB Hi-Fi Education and find out exactly how to do it**

- Why purchase your child's device with JB Hi-Fi Education?
- How to order your child's device
- What is available
- Tools

A top-down view of a person's hands working at a desk. The person is wearing a blue long-sleeved shirt and a black watch on their left wrist. They are holding a pen and writing on a piece of paper. To the left, there is a spiral-bound notebook with a white cover. In the background, a silver laptop is open, showing its keyboard. The desk is dark-colored, and the overall scene suggests a focused work or study environment.

school

Why purchase your child's device with JB Hi-Fi Education?

1. **Easy online selection and purchasing** of your child's school tech needs all in one place.
2. **Education pricing** on school-ready devices and accessories.
3. **Options to buy extended warranty and insurance, such as accidental damage.** Claims can be made through [the JB Hi-Fi Education](https://productcare.jbeducation.com.au/) warranty portal <https://productcare.jbeducation.com.au/>
4. **A choice of payment options** – credit card, BPAY, and buy now pay later through Afterpay and Zip.
5. **Convenient delivery options** – home, school and click & collect at one of over 200 participating JB Hi-Fi stores around Australia.
6. **The support of a dedicated customer service team**, six days a week.



How to order your child's device

Browsing and ordering technology is easy with JB Hi-Fi Education

1. Go to www.jbeducation.com.au/byod/
2. Enter the following BYOD code: **Bletchley25**
3. Once logged in, select a program
4. Choose your preferred delivery method
5. Select or compare your products
6. Select accessories and nominate for insurance. Enter your details to proceed.
7. Choose a payment method and complete your order.
No surcharges on credit card purchases.
8. Customer support is available

Monday to Friday: 9am - 6pm AEST
Saturday: 10am - 12pm AEST
Call: 1300 730 548



Student devices available:



Apple iPad (9th Gen) Wi-Fi / 10.9-inch / 64GB / Silver / iOS*

&

Apple iPad (10th Gen) Wi-Fi / 10.9-inch / 64GB / Silver / iOS*



***Accessories available at education pricing**

Key differences of 9th vs 10th Generation:

iPad 9th Generation

- 10.2" Display
- 8MP Wide Camera
- 1080p Video
- Lightning charge cable
- Includes AUX/Headphone jack
- A13 Bionic Chip

iPad 10th Generation

- 10.9" Display
- 12MP Wide Camera
- 4K Video
- USB-C Charge Cable
- No Headphone jack
- A14 Bionic Chip

Accessories available*:

- **Logitech Rugged Folio Keyboard Case (recommended)**
Example: RRP \$249 // BYOD \$187
- **Screen protectors (optional)**
- **Stylus options (optional)**
- **Charging adapters (optional)**
- **Power banks (optional)**
- **Carry bags (optional)**



Tools available for parents




How to order your child's BYOD device

JB Hi-Fi Education

JB Hi-Fi Education's Bring Your Own Device (BYOD) program is the easy way to purchase education-specific laptops, tablets and accessories that are compatible with your child's school and designed for the rigours of student life.

Education pricing means great value. Extended warranty and insurance options facilitate consistency of learning, whether at home or in the classroom.

Follow the step-by-step instructions below to order today.

-  **Enhanced performance and connectivity**
-  **Dedicated online portal**
-  **Education-specific products at commercial pricing**
-  **Extended warranty and insurance options**
-  **Robust devices suited to the rigours of student life**
-  **Home delivery, JB Hi-Fi store or school pick up**
-  **Finance options**
-  **A wide range of accessories**

How to order

1. Go to jbeducation.com.au/byod
2. Enter your school code
3. Once logged in, select the relevant student program.
4. Select home delivery or your preferred JB Hi-Fi store for pick up.
5. Follow the prompts to choose your device and accessories, as well as extended warranty and insurance options
6. Enter your personal details.
7. Select a payment method and complete your order.
8. If you have any questions, please contact us at jbeducation.com.au/byod or call **1300 730 548**.



qrco.de/JBBYOD

JB Hi-Fi Education | BYOD Parent's Toolkit 2023/24

Your protection if things go wrong

Even the best equipment can have problems. That's why we've got you covered so your downtime is never a problem.

If you experience an issue with your device within the period covered by either the Manufacturer's Warranty, Extended Warranty or the JB Hi-Fi Minimum Voluntary Warranty Policy, JB Hi-Fi will arrange a refund, repair or replace in accordance with the terms of the policy.

Note that all equipment sold by JB Hi-Fi Education is covered by the consumer guarantees under the Australian Consumer Law (ACL), along with a standard manufacturer's warranty and JB Hi-Fi Minimum Voluntary Warranty Policy. Details can be found here: <https://support.jbhi-fi.com.au>

JB Hi-Fi Education | BYOD Parent's Toolkit 2023/24

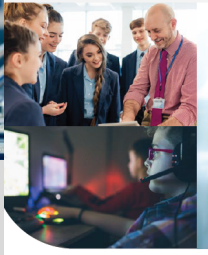
Whoops! Do you have accidental damage cover?

We all know that accidents happen with devices whether with food/drink spills, dropping the device or other physical impacts that affect the usability of your device. Our customers' Accidental Damage Protection (ADP) provides coverage for physical damage to your device.

These options afford you peace of mind that, should your child accidentally damage their device, you can have it repaired, with the only cost being the policy excess. This will get them back to study sooner.

Some of our plans combine Extended Warranty and Accidental Damage Protection Insurance, which gives you both certainty that product faults are covered for a longer period and comfort that damage caused to the device is taken care of.

If your equipment has been accidentally broken and you have not purchased any additional accidental damage cover (device insurance), please contact us at our warranty website: <https://productcare.jbeducation.com.au/>. One of our repair team members will give you a quote for the cost of the repair (available for Apple, Lenovo, HP and Microsoft Surface).



JB Hi-Fi Education. More for Education.



The Big BYOD Toolkit for Parents



FAQ's

Do I need to purchase my device with JB Hi-Fi Education?

When will the portal be available?

How long is the program available?

Can I place an order for multiple children?

How will I receive my order?

Do I need to buy insurance?

Can I pay for my order with JB Hi-Fi gift cards?

Who do I contact for support when ordering?

- For help on how to use the JB Hi-Fi Education BYOD portal or orders you have placed through the portal, go to the [JB Hi-Fi Parent Tool Kit](#), email byodsupport@jbhifi.com.au or call **1300 730 548**

Thank you



● JB Hi-Fi Education.
More for schools.



QUESTIONS?

